



# L0620M-PAS106 SYSTEM DATASHEET



SYSTEM PERFORMANCE	METRIC	IMPERIAL
Sine Force Peak kN (lbf)	5.88	1,321
Random Force rms kN (lbf)	5.88	1,321
Shock Force (6ms) kN (lbf)	11.76	2,643
Useful Frequency Range Hz	5 - 5000	5 - 5000
Continuous Displacement mm (in)	51	2.0
Shock Displacement mm (in)	51	2.0
Max Velocity m/s (in/s)	2	78.7
Max Acceleration Sine Peak m/s <sup>2</sup> (g)	980	100

Air-cooled system ideally suited to test small sized electronic parts, connectors, hand-held units and small mechanical assemblies.

- Continuous displacement 51 mm (2.0 in)
- Useable frequency range 5 - 5000 Hz
- Max static payload 200 kg (441 lb)
- Air-cooled amplifier efficiency > 90%
- Rugged isolated trunnion

L0620M SHAKER	METRIC	IMPERIAL
Armature Diameter mm (in)	200	7.9
Armature Material	Mg	Mg
Effective Armature Mass kg (lb)	6	13.2
Armature Insert Pattern PCD mm (in) plus 1 in center	8-100/8-160	8-4/8-6.5
Armature Insert Threads	M8	5/16-18UNC
First Resonant Frequency (bare table) ±5% Hz	3800	3800
Max Static Payload kg (lb)	200	441
Natural Frequency Thrust Axis Hz	< 5	< 5
Stray Flux Density gauss	< 10	< 10
Shaker Weight Uncrated kg (lb)	620	1,367
Dimensions Uncrated (W x D x H) mm (in)	809 x 805 x 1040	31.9 x 31.7 x 40.9

## SLIP TABLES

Mono-base slip tables in a wide-range of sizes and configurations for maximum over-turning moment and cross-axial restraint

## OPTIONS & ACCESSORIES

Sentek Dynamics offers a wide selection of options and accessories for unique applications and complete turn-key systems.

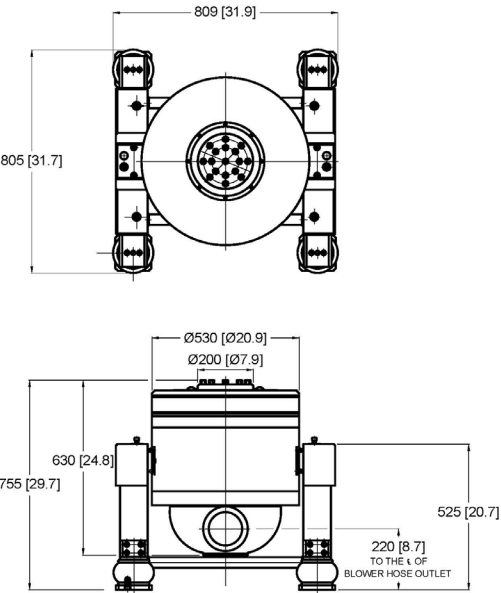
- Custom armature and slip table insert patterns and threads available
- Air-isolation feet, pads and mounts to eliminate need for seismic floor
- Thermal barrier for use with environmental test chambers
- Remote control panel for remote operation

PAS106 POWER AMPLIFIER	METRIC	IMPERIAL
Number of Sub-modules Supplied	1	1
Rated Power Output kVA	6	6
Rated Output Voltage V rms	110	110
Rated Output Current A rms	56	56
Number of Cabinets	1	1
System Required Power kVA	12	12
Amplifier Weight Uncrated kg (lb)	240	529
Dimensions Uncrated (W x D x H) mm (in)	580 x 850 x 950	22.8 x 33.5 x 37.4

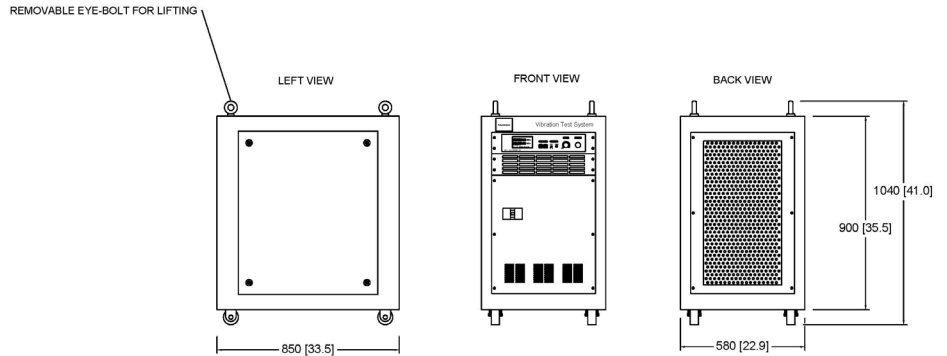
BU-2 BLOWER	METRIC	IMPERIAL
Standard Air Hose Length m (ft)	5	16.4
Hose Diameter mm (in)	125	4.9
Blower Unit Weight Uncrated kg (lb)	120	265
Dimensions (W x D x H) mm (in)	600 x 710 x 1120	23.6 x 28.0 x 44.1



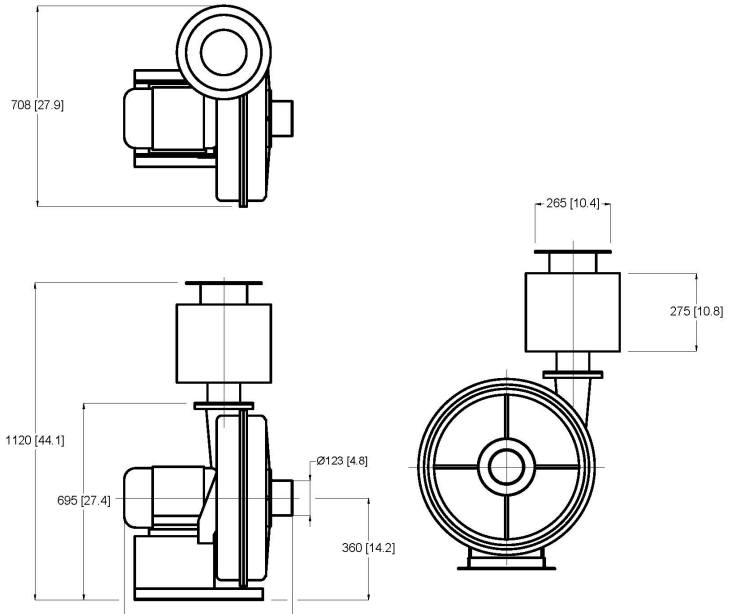
**SHAKER MODEL L0620M**



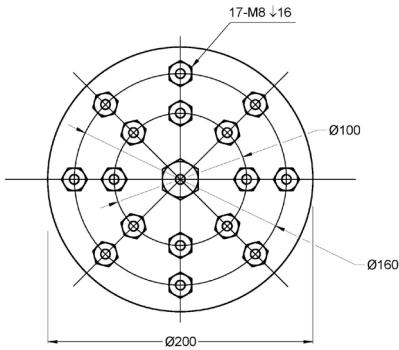
**POWER AMPLIFIER MODEL PAS106**



**BLOWER UNIT MODEL BU-2**



**ARMATURE INSERT PATTERN**



SENTEK DYNAMICS  
2370 OWEN STREET  
SANTA CLARA, CA 95054  
UNITED STATES OF AMERICA

PHONE: +1.408.200.3100 | FAX: +1.408.659.8229 | WWW.SENTEKDYNAMICS.COM | SALES@SENTEKDYNAMICS.COM

© 2017 Sentek Dynamics, All Rights Reserved. 03/2017

Notice: This document is for informational purposes only and does not set forth any warranty, expressed or implied, concerning any equipment, equipment feature, or service offered or to be offered by Sentek Dynamics. Sentek Dynamics reserves the right to make changes to this document at any time, without notice, and assumes no responsibility for its use. This informational document describes features that may not be currently available. Contact a Sentek Dynamics sales representative for information on features and product availability.